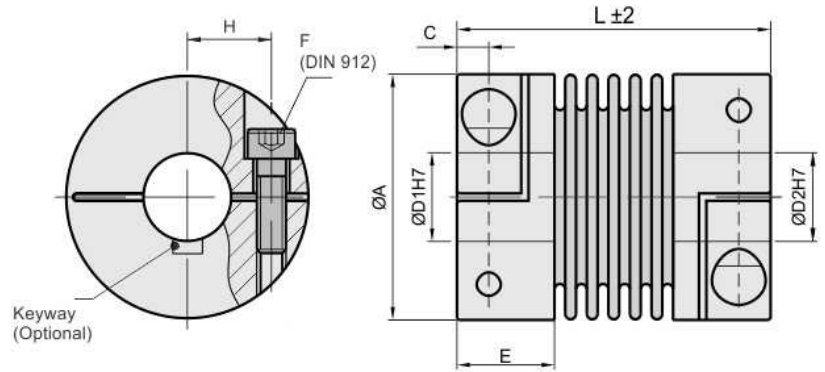


Metal Bellow Coupling

Clamping Hubs (for Encoders and Stepper Motors)



	DIMENSIONS (mm)									TECHNICAL DATA								
	Rated Torque TKN (Nm)	Length (±1) L	Outer Ø Ø A	Bore (H7) min ~ max		Bolt Center Distance		Hub Length E	Max Ø Ø B	Screw (DIN 912) TA (Nm) F	Mass (g)	Moment of Inertia J (g cm ²)	Spring Stiffness			Misalignment		
				D1/D2	H	C	torsional CT (Nm/rad)						radial CR (N/mm)	axial CA (N/mm)	radial DKr (mm)	axial DKa (mm)	angular DKw (°)	
ONX2/1	0.1	25	10	2~4		3.4	2	7	11	M1.6 0.1	3	0.5	65	10	14	0.12	0.2	1.2
ONX2/5	0.5	21	15.5	3~8		5.2	2.5	7	17.5	M2	7.5	2.7	260	43	13	0.1	0.2	1
		0.43								7.8	2.8	200	18	10	0.15	0.3	1.5	
										8.2	3	160	9	8	0.2	0.4	2	
ONX2/10	1.0	23	15.5	3~8		5.2	2.5	7	17.5	M2	9	3.1	510	74	27	0.1	0.2	1
		0.43								9.3	3.4	380	31	20	0.15	0.3	1.5	
										10	3.7	310	16	16	0.2	0.4	2	
ONX2/15	1.5	26	20	3~10		7	3	9	21	M2.5	13	8	750	59	15	0.1	0.3	1.5
		0.85								15	9.3	700	20	9	0.15	0.4	2	
ONX2/20	2.0	32	25	3~14		9	3.5	11	18	M3	29	24	1500	67	12	0.15	0.3	1.5
		2								32	27	1300	21	11	0.2	0.4	1.5	
										33	29	1050	11	9	0.25	0.5	2	
ONX2/45	4.5	41	32.5	6~16		12	5	14	34	M4	61	100	6500	168	32	0.2	0.3	1.5
		3.5								67	112	4200	41	20	0.2	0.5	2	
ONX2/100	10	48	40.5	6~22		15.5	5	14	41.5	M4	86	233	8100	120	27	0.15	0.4	1.5
		4.5								106	290	6800	29	17	0.3	0.6	2	
								120	330	6800	29	17	0.3	0.6	2			

ORDER CODE EXAMPLE

ONX 2 /45	-	41	-	10	k	-	10	k	-	H7	
Type / Size		Length L		Bore (ØD1)	Keyway Optional		Bore (ØD2)	Keyway Optional		Bore Tolerance	Custom Options

Material (Standard):
Bellow - Stainless Steel
Hubs - Aluminium

Speeds:
max. 15000 min⁻¹

Optional (Custom/Non Standard):
S - Stainless Steel Hub
H - High Speed above 10,000rpm
Suffix K after each bore size if keyway is required (ISOR773-Js9 Standards) :-

Dimensions : unit(mm)

Temperature Range:
-30° to +120°C (3.6F - 250F)

eg: ONX 4/60-79-12K-20K