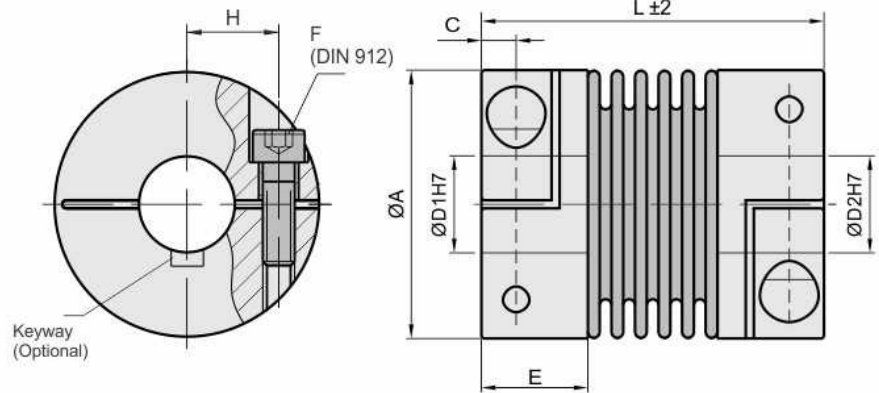


Metal Bellow Coupling



	DIMENSIONS (mm)							TECHNICAL DATA									
	Rated Torque TKN (Nm)	Length (±2) L	Outer Ø A	Bore Range (H7) min ~ max D1 / D2	Bolt Center Distance		Hub Length E	Screw (DIN 912) TA (Nm) F	Mass (kg)	Moment of Inertia J (g m ²)	Spring Stiffness			Misalignment			max Speed rpm
					H	C					torsional CT 10 ³ xNm/rad	radial CR (N/mm)	axial CA (N/mm)	radial DKr (mm)	axial DKa (mm)	angular DKw (°)	
ONX4/18	18	63	45	10~25.4	17	5.5	19.5	M5	0.1	0.04	20	205	50	0.2	0.5	1.5	10000
		71						8	0.15	0.05	15	82	36	0.25	0.5	2	10000
ONX4/30	30	65	56	10~30	20	7.5	24.5	M6	0.3	0.15	38	720	50	0.15	0.6	1.5	10000
		73						15	0.32	0.16	28	225	28	0.25	1	2	10000
ONX4/60	60	79	66	12~35	23	10	29	M8	0.5	0.33	75	1150	90	0.15	0.6	1.5	8700
		89						40	0.6	0.36	50	340	50	0.25	1	2	8700
ONX4/80	80	91	82	14~42	28	11	33.5	M10	1.8	2.0	128	1200	80	0.2	0.5	1.5	6900
		102						72	1.9	2.1	75	400	50	0.25	0.8	2	6900
ONX4/150	150	91	82	18~42	28	11	33.5	M10	1.8	2.0	155	2020	145	0.2	0.5	1.5	6900
		102						84	1.9	2.1	105	595	85	0.25	0.5	2	6900
ONX4/200	200	101	90	22~45	31	13	38	M12	2.6	3.3	175	2500	145	0.2	0.5	1.5	6400
		113						125	2.7	3.5	120	460	82	0.25	0.8	2	6400
ONX4/300	300	105	110	30~60	39	13	38	M12	3.6	7.3	502	6300	280	0.2	0.5	1.5	6000
		116						145	3.7	7.5	285	1400	145	0.25	0.8	2	6000
ONX4/500	500	112	122	35~70	42	15	42	M12	5.1	12.4	690	7790	100	0.2	0.5	1.5	5000
		123						145	5.2	12.7	320	970	85	0.25	1	2	5000

ORDER CODE EXAMPLE

ONX 4 / 60	-	79	-	15	k	-	20	k	-	H7	
Type / Size		Length (L)		Bore (ØD1)	Keyway Optional		Bore (ØD2)	Keyway Optional		Bore Tolerance	Custom Options

Material (Standard):
 Bellow - Stainless Steel
 Hubs (ONX4/18 - 4/150) - Aluminium
 Hubs (ONX4/200 - 4/500) - Steel Alloy

Speeds:
 Standard upto 10,000 rpm,
 above 10,000 available with finely
 balanced against special demand.

Optional (Custom/Non Standard):
 S - Stainless Steel Hub
 H - High Speed above 10,000rpm
 Suffix K after each bore size if keyway is
 required (ISOR773-Js9 Standards) :-

Dimensions : unit(mm)

Temperature Range:
 -30° to +120°C (3.6F - 250F)

eg: ONX 2/100-48-15K-18K