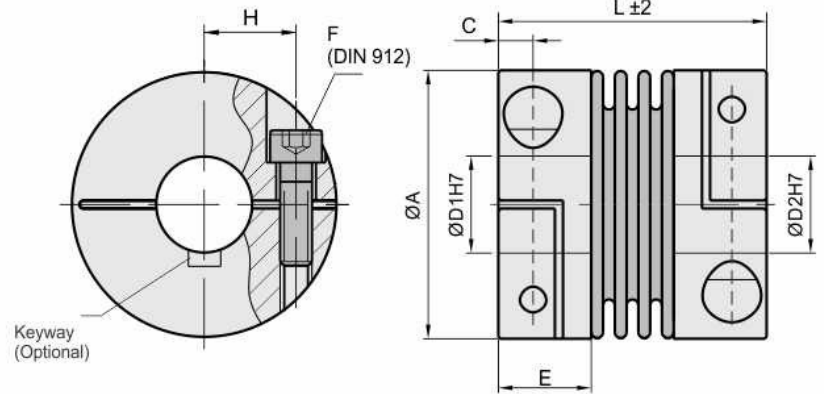
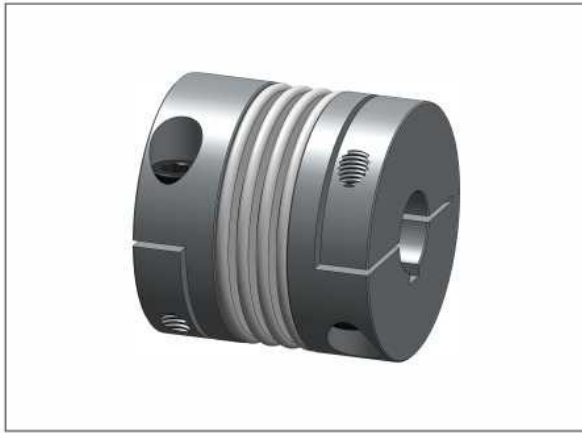


# Metal Bellow Coupling

# Clamping Hubs (Compact version)



	DIMENSIONS (mm)							TECHNICAL DATA									
	Rated Torque TKN (Nm)	Length (±2) L	Outer Ø A	Bore Range (H7) min ~ max D1 / D2	Bolt Center Distance		Hub Length E	Screw (DIN 912) TA (Nm) F	Mass (kg)	Moment of Inertia J (g m <sup>2</sup> )	Spring Stiffness			Misalignment			max Speed rpm
					H	C					torsional CT 10 <sup>3</sup> x Nm/rad	radial CR (N/mm)	axial CA (N/mm)	radial DKr (mm)	axial DKa (mm)	angular DKw (°)	
ONX4C/30	30	58	56	10 ~ 30	20	7	21	M6	0.26	0.13	38	720	50	0.15	0.6	1.5	10000
		66						15	0.27	0.14	28	225	28	0.25	1	2	10000
ONX4C/60	60	67	66	12 ~ 35	23	8.5	23	M8	0.36	0.28	75	1150	90	0.15	0.6	1.5	8700
		77						40	0.40	0.31	50	340	50	0.25	1	2	8700
ONX4C/80	80	79	82	14 ~ 42	28	9.5	27.5	M10	0.70	0.78	128	1200	80	0.2	0.5	1.5	6900
		90						72	0.75	0.84	75	400	50	0.25	0.8	2	6900
ONX4C/150	150	79	82	18 ~ 42	28	9.5	27.5	M10	0.72	0.80	155	2020	145	0.2	0.5	1.5	6900
		90						84	0.78	0.85	105	595	85	0.25	0.5	2	6900
ONX4C/200	200	83	90	22 ~ 45	31	10.5	29	M12	2.2	1.19	175	2500	145	0.2	0.5	1.5	6400
		95						125	2.4	1.27	120	460	82	0.25	0.8	2	6400
ONX4C/300	300	95	110	30 ~ 60	39	11.6	33	M12	3.1	2.74	502	6300	280	0.2	0.5	1.5	6000
		106						145	3.3	2.86	285	1400	145	0.25	0.8	2	6000
ONX4C/500	500	100	122	30 ~ 70	42	13.5	36	M12	4.5	4.45	690	7790	100	0.2	0.5	1.5	5000
		111						145	4.8	4.70	320	970	85	0.25	1	2	5000

## ORDER CODE EXAMPLE

<b>ONX 4C/60</b>	-	<b>67</b>	-	<b>15</b>	<b>k</b>	-	<b>20</b>	<b>k</b>	<b>H7</b>	-	
Type / Size		Length (L)		Bore (ØD1)	Keyway Optional		Bore (ØD2)	Keyway Optional	Bore Tolerance		Custom Options

Material (Standard):  
Bellow - Stainless Steel  
Hubs - Aluminium

Temperature Range:  
-30° to +120°C (3.6F - 250F)

Speeds:  
Standard upto 10,000 rpm,  
above 10,000 available with finely  
balanced against order.

Dimension : unit(mm)

Optional (Custom/Non Standard):  
S - Stainless Steel Hub  
H - High Speed above 10,000rpm  
Suffix K after each bore size if keyway is  
required (ISO/R773-Js9 Standards) :-

eg: ONX 4C/60-67-12K-20K